

MSA Passive Shutdown System (PSS) Addendum

The Passive Shutdown System (PSS) consists of P/Ns 10048277 and 10048278) and does not:

- contain a power cable
- come with the sensor end cable connected.

Fittings for the power and sensor cables (P/N 10045498) are provided unattached for customer-installation. It is the customer's responsibility to supply the power cable (P/N 10045495).

⚠ WARNING

The following parts must be used with this product; otherwise, substitution with alternate parts can result in serious personal injury or death.

- Cable (P/N 10045495)
- Connector Kit (P/N 10045498)

⚠ WARNING

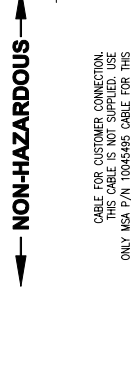
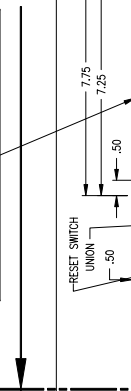
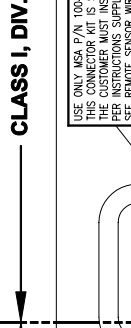
This cable must be assembled and installed according to the instructions enclosed with the Connector Kit and according to installation outline drawings

(P/Ns 10000017058 and 10000017059) included in this Addendum. Failure to follow these documents when assembling and installing this cable on a PSS can result in serious personal injury or death.

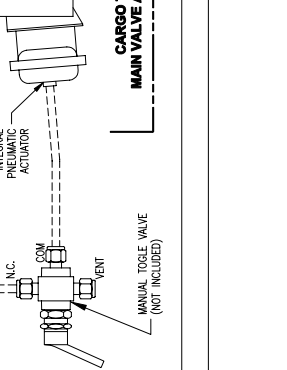
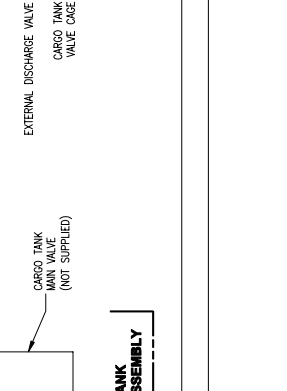
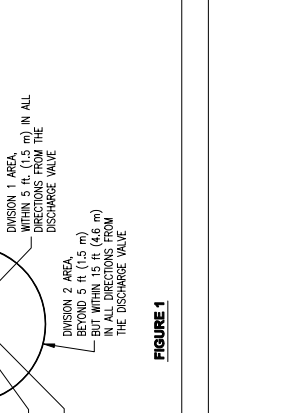
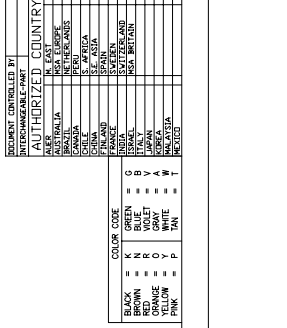
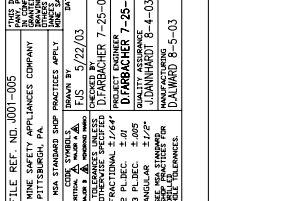
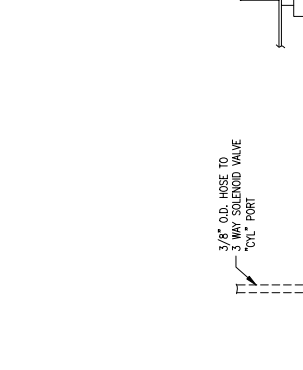
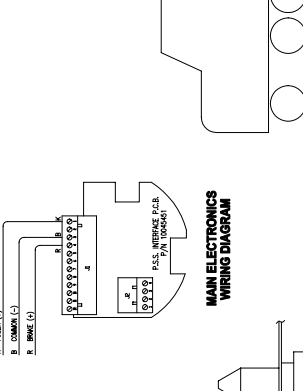
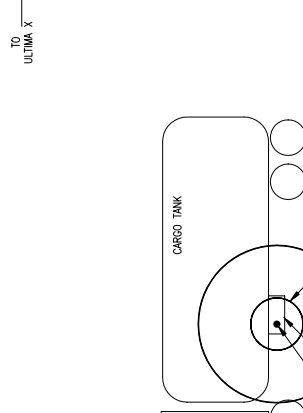
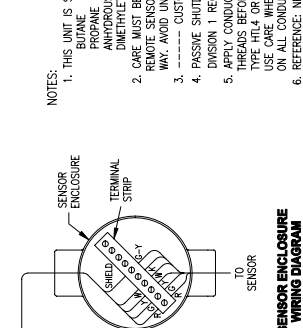
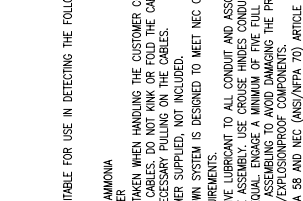
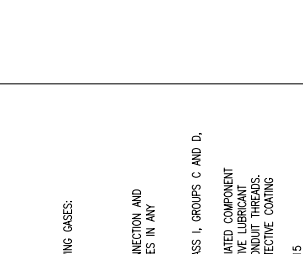
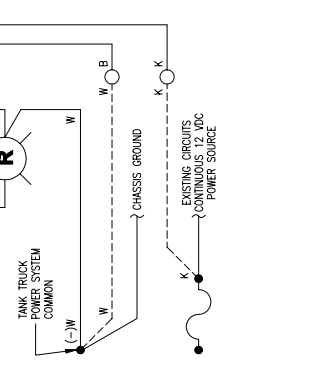
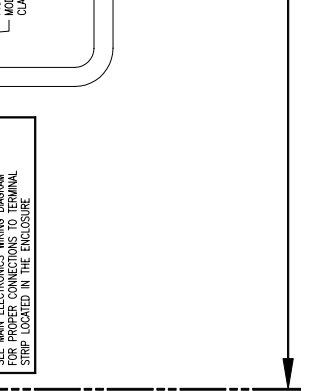
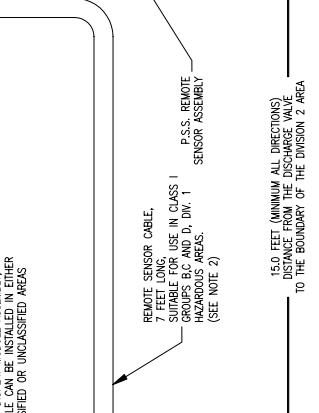
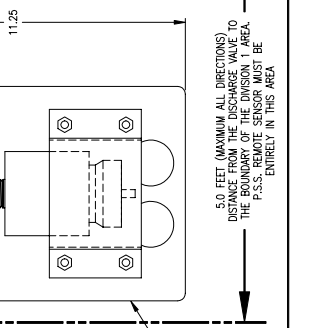
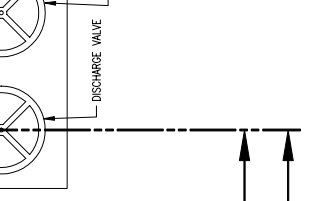
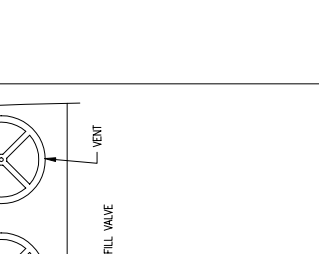
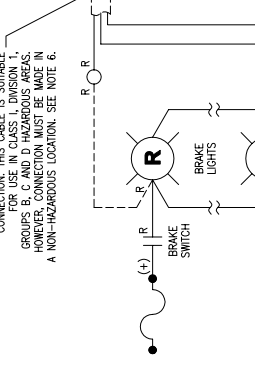
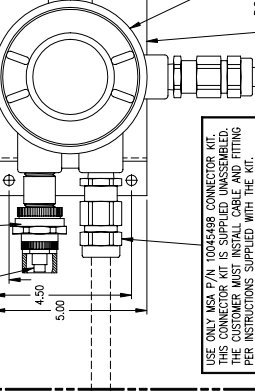
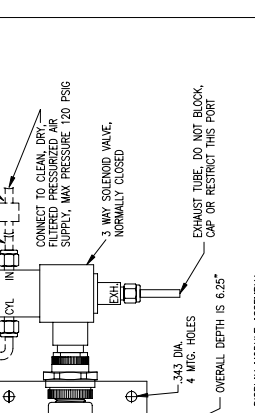
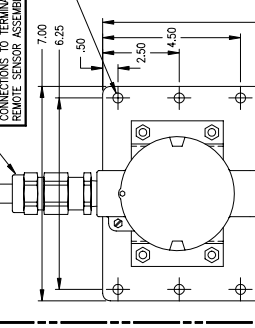
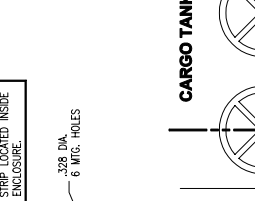
ITEM NO.	MAT'L MASTER NO.	DESCRIPTION	REVISIONS
			AUG. 11, 2003

CLASS I, DIV. 1

USE ONLY MSA P/N 1004633 CONNECTOR KIT. THIS CONNECTOR KIT IS SUPPLIED UNASSEMBLED. THE CUSTOMER MUST INSTALL CABLE AND FITTING PER CUSTOMER ASSEMBLY INSTRUCTIONS. SEE REMOTE SENSOR WIRING DIAGRAM FOR PROPER CONNECTIONS TO TERMINAL STRIP LOCATED INSIDE REMOTE SENSOR ASSEMBLY ENCLOSURE.



CLASS I, DIV. 2



- NOTES:
1. THIS UNIT IS SUITABLE FOR USE IN DETECTING THE FOLLOWING GASES:
 BUTANE
 PROPANE
 ANHYDROUS AMMONIA
 DIMETHYLETHER
 2. CARE MUST BE TAKEN WHEN HANDLING THE CUSTOMER CONNECTION AND REMOTE SENSOR CABLES. DO NOT KINK OR FOLD THE CABLES IN ANY WAY. AVOID UNNECESSARY PULLING ON THE CABLES.
 3. ----- CUSTOMER SUPPLIED, NOT INCLUDED.
 3. PASSIVE SHUTDOWN SYSTEM IS DESIGNED TO MEET NEC CLASS I, GROUPS C AND D, DIVISION 1 REQUIREMENTS.
 4. APPLY CONDUCTIVE LUBRICANT TO ALL CONDUIT AND ASSOCIATED COMPONENT THREADS BEFORE ASSEMBLY. USE GROSS HANDED CONDUCTIVE LUBRICANT. DO NOT USE GREASE. APPLY LUBRICANT TO ALL CONDUIT AND COMPONENTS. USE CARE WHEN ASSEMBLING TO AVOID DAMAGING THE PROTECTIVE COATING ON ALL CONDUIT/EXPLOSIONPROOF COMPONENTS.
 5. REFERENCE: MFA 58 AND NEC (ANSI/NFPA 70) ARTICLE 515

FILE REF. NO.	DATE	BY	DESCRIPTION
001-005	5/22/03	D. FARRACHER	INITIAL DESIGN
001-006	5/22/03	D. FARRACHER	REVISED FOR MFA 58
001-007	5/22/03	D. FARRACHER	REVISED FOR MFA 58
001-008	5/22/03	D. FARRACHER	REVISED FOR MFA 58
001-009	5/22/03	D. FARRACHER	REVISED FOR MFA 58
001-010	5/22/03	D. FARRACHER	REVISED FOR MFA 58
001-011	5/22/03	D. FARRACHER	REVISED FOR MFA 58
001-012	5/22/03	D. FARRACHER	REVISED FOR MFA 58
001-013	5/22/03	D. FARRACHER	REVISED FOR MFA 58
001-014	5/22/03	D. FARRACHER	REVISED FOR MFA 58
001-015	5/22/03	D. FARRACHER	REVISED FOR MFA 58
001-016	5/22/03	D. FARRACHER	REVISED FOR MFA 58
001-017	5/22/03	D. FARRACHER	REVISED FOR MFA 58
001-018	5/22/03	D. FARRACHER	REVISED FOR MFA 58
001-019	5/22/03	D. FARRACHER	REVISED FOR MFA 58
001-020	5/22/03	D. FARRACHER	REVISED FOR MFA 58
001-021	5/22/03	D. FARRACHER	REVISED FOR MFA 58
001-022	5/22/03	D. FARRACHER	REVISED FOR MFA 58
001-023	5/22/03	D. FARRACHER	REVISED FOR MFA 58
001-024	5/22/03	D. FARRACHER	REVISED FOR MFA 58
001-025	5/22/03	D. FARRACHER	REVISED FOR MFA 58
001-026	5/22/03	D. FARRACHER	REVISED FOR MFA 58
001-027	5/22/03	D. FARRACHER	REVISED FOR MFA 58
001-028	5/22/03	D. FARRACHER	REVISED FOR MFA 58
001-029	5/22/03	D. FARRACHER	REVISED FOR MFA 58
001-030	5/22/03	D. FARRACHER	REVISED FOR MFA 58
001-031	5/22/03	D. FARRACHER	REVISED FOR MFA 58
001-032	5/22/03	D. FARRACHER	REVISED FOR MFA 58
001-033	5/22/03	D. FARRACHER	REVISED FOR MFA 58
001-034	5/22/03	D. FARRACHER	REVISED FOR MFA 58
001-035	5/22/03	D. FARRACHER	REVISED FOR MFA 58
001-036	5/22/03	D. FARRACHER	REVISED FOR MFA 58
001-037	5/22/03	D. FARRACHER	REVISED FOR MFA 58
001-038	5/22/03	D. FARRACHER	REVISED FOR MFA 58
001-039	5/22/03	D. FARRACHER	REVISED FOR MFA 58
001-040	5/22/03	D. FARRACHER	REVISED FOR MFA 58
001-041	5/22/03	D. FARRACHER	REVISED FOR MFA 58
001-042	5/22/03	D. FARRACHER	REVISED FOR MFA 58
001-043	5/22/03	D. FARRACHER	REVISED FOR MFA 58
001-044	5/22/03	D. FARRACHER	REVISED FOR MFA 58
001-045	5/22/03	D. FARRACHER	REVISED FOR MFA 58
001-046	5/22/03	D. FARRACHER	REVISED FOR MFA 58
001-047	5/22/03	D. FARRACHER	REVISED FOR MFA 58
001-048	5/22/03	D. FARRACHER	REVISED FOR MFA 58
001-049	5/22/03	D. FARRACHER	REVISED FOR MFA 58
001-050	5/22/03	D. FARRACHER	REVISED FOR MFA 58
001-051	5/22/03	D. FARRACHER	REVISED FOR MFA 58
001-052	5/22/03	D. FARRACHER	REVISED FOR MFA 58
001-053	5/22/03	D. FARRACHER	REVISED FOR MFA 58
001-054	5/22/03	D. FARRACHER	REVISED FOR MFA 58
001-055	5/22/03	D. FARRACHER	REVISED FOR MFA 58
001-056	5/22/03	D. FARRACHER	REVISED FOR MFA 58
001-057	5/22/03	D. FARRACHER	REVISED FOR MFA 58
001-058	5/22/03	D. FARRACHER	REVISED FOR MFA 58
001-059	5/22/03	D. FARRACHER	REVISED FOR MFA 58
001-060	5/22/03	D. FARRACHER	REVISED FOR MFA 58
001-061	5/22/03	D. FARRACHER	REVISED FOR MFA 58
001-062	5/22/03	D. FARRACHER	REVISED FOR MFA 58
001-063	5/22/03	D. FARRACHER	REVISED FOR MFA 58
001-064	5/22/03	D. FARRACHER	REVISED FOR MFA 58
001-065	5/22/03	D. FARRACHER	REVISED FOR MFA 58
001-066	5/22/03	D. FARRACHER	REVISED FOR MFA 58
001-067	5/22/03	D. FARRACHER	REVISED FOR MFA 58
001-068	5/22/03	D. FARRACHER	REVISED FOR MFA 58
001-069	5/22/03	D. FARRACHER	REVISED FOR MFA 58
001-070	5/22/03	D. FARRACHER	REVISED FOR MFA 58
001-071	5/22/03	D. FARRACHER	REVISED FOR MFA 58
001-072	5/22/03	D. FARRACHER	REVISED FOR MFA 58
001-073	5/22/03	D. FARRACHER	REVISED FOR MFA 58
001-074	5/22/03	D. FARRACHER	REVISED FOR MFA 58
001-075	5/22/03	D. FARRACHER	REVISED FOR MFA 58
001-076	5/22/03	D. FARRACHER	REVISED FOR MFA 58
001-077	5/22/03	D. FARRACHER	REVISED FOR MFA 58
001-078	5/22/03	D. FARRACHER	REVISED FOR MFA 58
001-079	5/22/03	D. FARRACHER	REVISED FOR MFA 58
001-080	5/22/03	D. FARRACHER	REVISED FOR MFA 58
001-081	5/22/03	D. FARRACHER	REVISED FOR MFA 58
001-082	5/22/03	D. FARRACHER	REVISED FOR MFA 58
001-083	5/22/03	D. FARRACHER	REVISED FOR MFA 58
001-084	5/22/03	D. FARRACHER	REVISED FOR MFA 58
001-085	5/22/03	D. FARRACHER	REVISED FOR MFA 58
001-086	5/22/03	D. FARRACHER	REVISED FOR MFA 58
001-087	5/22/03	D. FARRACHER	REVISED FOR MFA 58
001-088	5/22/03	D. FARRACHER	REVISED FOR MFA 58
001-089	5/22/03	D. FARRACHER	REVISED FOR MFA 58
001-090	5/22/03	D. FARRACHER	REVISED FOR MFA 58
001-091	5/22/03	D. FARRACHER	REVISED FOR MFA 58
001-092	5/22/03	D. FARRACHER	REVISED FOR MFA 58
001-093	5/22/03	D. FARRACHER	REVISED FOR MFA 58
001-094	5/22/03	D. FARRACHER	REVISED FOR MFA 58
001-095	5/22/03	D. FARRACHER	REVISED FOR MFA 58
001-096	5/22/03	D. FARRACHER	REVISED FOR MFA 58
001-097	5/22/03	D. FARRACHER	REVISED FOR MFA 58
001-098	5/22/03	D. FARRACHER	REVISED FOR MFA 58
001-099	5/22/03	D. FARRACHER	REVISED FOR MFA 58
001-100	5/22/03	D. FARRACHER	REVISED FOR MFA 58

AGENCY CONTROLLED	SCALE	DATE
YES	1:50	5/22/03
NO	1:50	5/22/03

INSTALLATION OUTLINE	PASSIVE SHUTDOWN SYSTEM, AIR OPERATED, FIELD INSTALLED REMOTE SENSOR
YES	YES
NO	NO

AGENCY CONTROLLED	SCALE	DATE
YES	1:50	5/22/03
NO	1:50	5/22/03

AGENCY CONTROLLED	SCALE	DATE
YES	1:50	5/22/03
NO	1:50	5/22/03

AGENCY CONTROLLED	SCALE	DATE
YES	1:50	5/22/03
NO	1:50	5/22/03

FIGURE 1

DSK 10000017058

