



MSA Chillgard® RT Monitor

[Designed for Transportable Refrigerant Monitoring Applications]

Application

Though the refrigerant R-123 is safer for the ozone layer than R-11 and other CFCs, it has prompted some concern with regard to its toxicological properties. As a result, toxic threshold limits for R-123 have been set at a level that is 20 times lower than that of R-11 and other common refrigerants, presenting a more significant monitoring need.

To enable service personnel to safely work in mechanical equipment rooms and other areas that have chillers containing R-123, a low-level leak monitor must be present. The monitor must be set to measure and alarm at or below the toxic threshold. In some applications a fully transportable leak detection system, capable of being easily moved from job to job, is preferred.

Product Description

MSA's custom-designed Chillgard RT Monitor provides the solution for this application. Mounted on shocks inside a rugged case which has wheels and a telescoping handle for toting, the best-selling Chillgard RT Monitor provides low-level monitoring based on advanced, proven photoacoustic infrared sensing technology. A power cord and sample line with filter are included; both conveniently connect to the outside of the case. A prewired annunciator bracket quickly and easily mounts to the top of the open lid and is visible from any angle. Setpoints are factory-set and password-protected per customer specifications.

Check gas and a demand regulator are included for quick system pretests. The entire system set-up takes less than two minutes, allowing personnel to commence work almost immediately upon arrival at the job site.



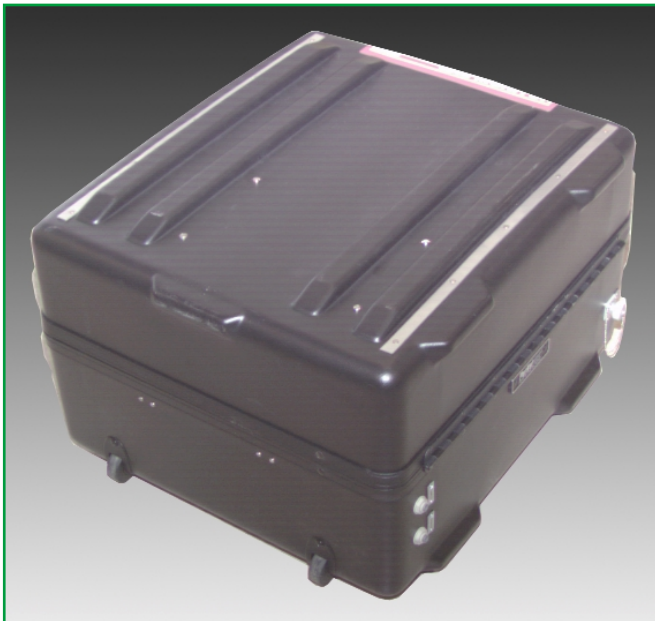
System Contents

- Shock-mounted MSA Chillgard RT Monitor
- Rugged case with wheels and telescopic handle for easy transport
- Power cord
- Sample line with filter
- Prewired annunciator bracket
- Check gas and demand regulator

Note: This is a representative description of this product and its potential applications. Contact MSA Custom Products at customproducts@MSAnet.com for information on customizing this unit to fit a specific need.

Specifications

Operating Temperature Range	32 to 122°F (0 to 50°C)
Power Supply:	120 VAC ±10 %, 0.56 amps, or 240 VAC ±10 %, 0.3 amps
Signal Output:	0-10 volt, and 4 to 20 mA isolated sourcing; RS-232
Relay Contacts:	3 alarm relays at 8 amps resistive
Enclosure:	NEMA4
Dimensions:	25" H x 21.5" W x 17" D
Weight:	80 lb.



Transportable Chillgard RT Monitor with case closed, displaying built-in wheels.



Transportable Chillgard RT Monitor with built-in handle, ready to transport.

Note: This Data Sheet contains only a general description of the product shown. While uses and performance capabilities are described, under no circumstances should the product be used except by qualified, trained personnel, and not until the instructions, labels or other literature accompanying the product have been carefully read and understood and the precautions therein set forth followed. Only they contain the complete and detailed information concerning this product.

Data Sheet 07-0006
Mar 2002 (L)
© MSA 2002 Printed in U.S.A.



Instrument Division:
P.O. Box 427, Pittsburgh
PA 15230 U.S.A.
<http://www.msanet.com>

In U.S.:
Phone: 1-800-MSA-INST
Fax: 1-724-776-3280

In Canada:
Phone: 1-800-MSA-INST
Fax: 1-416-663-5908

In Mexico:
Phone: 52 (5) 5 76 64 44
Fax: 52 (5) 3 59 43 30

MSA International:
Phone: 412-967-3228
Fax: 412-967-3373

Offices and representatives worldwide

For further information:

