

MSA Orion® G Multigas and Leak Detector Coiled Probe

- This instruction sheet contains information specific to the Coiled Probe version of the Orion G Multigas and Leak Detector.
- All information contained in the Orion G Operating Manual (P/N 10040520) applies to this version, with the following exceptions and/or additions:

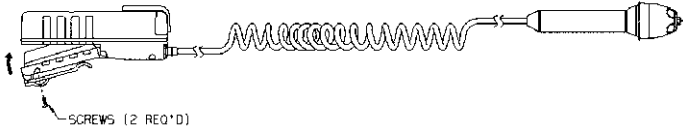


Figure 1. Battery Pack Installation and Removal
(replaces FIGURES 3-1 and 4-1
In the Orion G operating manual)

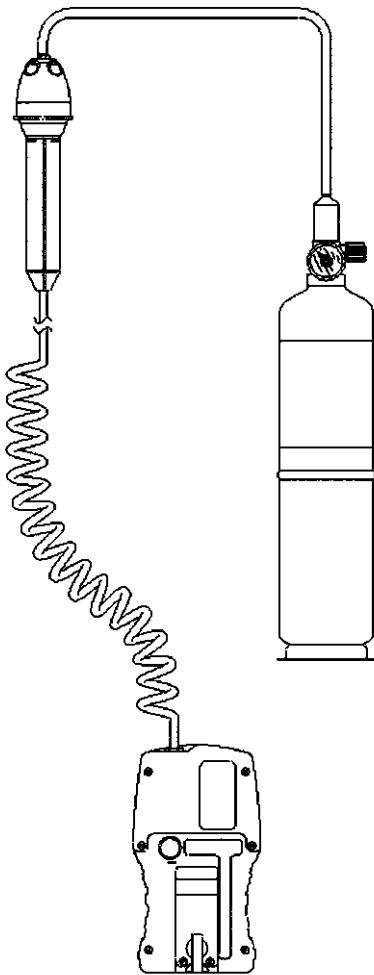


Figure 2. Orion G Detector and Calibration Setup
(replaces FIGURES 3-4 and 5-4
in the Orion G operating manual)

Table 1. Replacement Parts List

(replaces TABLE 8-2 in the Orion G operating manual)

FIGURE 3 or 4 ITEM NO.	PART/COMPONENT	PART NO.
<i>(replaces FIGURE 8-1 or 8-2 in the Orion G operating manual)</i>		
1 & 13	Pump Cap Assembly, (includes Screw P/N 1002551 and Gasket P/N 10022102)	10040782
2	Pump Cap Screw	10025551
3	Case Screws	10022921
4	Sensor Cover	10022105
5	Sensor Membrane	10022104
6	Sensor Cover Gasket	10022096
7	Oxygen Sensor	10025940
8	Hydrogen Sulfide Sensor	711307
9	Combustible Sensor (LEL/CH ₄)	10024247
10	Carbon Monoxide Sensor	711306
11	Sensor Gasket	10022331
12	Front Case Assy. (non-saleable)	-----
13	see #1 above	-----
14	Pump Cap Gasket	10022102
15	Display Assy.	10039937
16	Printed Circuit Board Assy, Main	10036906
17	LINK Printed Circuit Board Assy.	10030392
18	Case Gasket	10022100
19	Pump & Drive Replacement Kit	10041228
20	Printed Circuit Board Assy. Connector	10036908
21	Case, Rear, with Coiled Cord	10041227
22	Coiled Cord and Base	-----
---	Internal Firewall Filter (not shown)	634261
23	Case, Rear, with Coil	10045979

MSA Orion® G Multigas and Leak Detector Coiled Probe

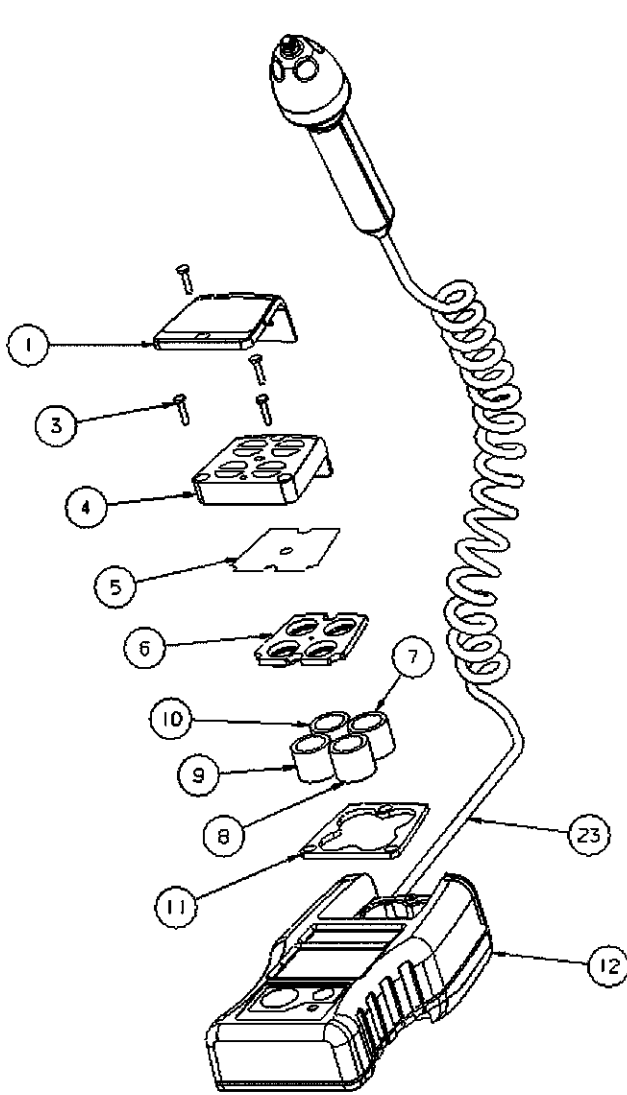


Figure 3. Replacement Parts (see TABLE 1)
(replaces FIGURE 8-1 and TABLE 8-2
in the Orion G operating manual)

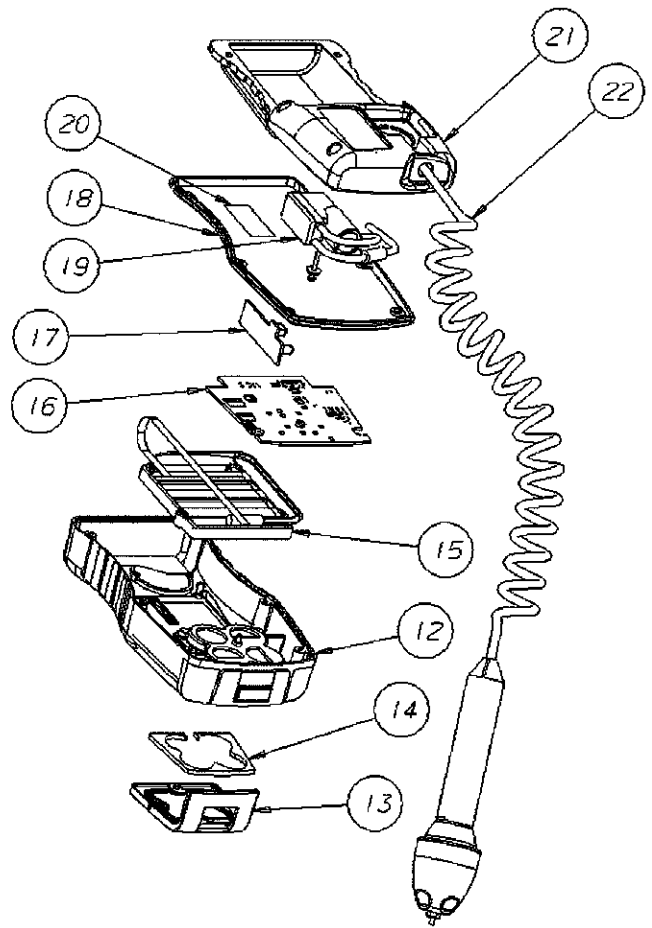


Figure 4. Replacement Parts (see TABLE 1)
(replaces FIGURE 8-2 and TABLE 8-2
in the Orion G operating manual)