

# MSA Latchways Mini Personal Fall Limiter

Impressive Innovation in a Compact Size



## MSA Latchways Mini PFL

Suitable for multiple applications, the 6 ft (1.8 m) Mini PFL is designed specifically for environments where close anchorage is available.

### Compact and Versatile

The MSA Latchways Mini PFL is the most compact & lightweight self-retracting lanyard ever developed using multiple spring radial energy-absorbing technology. This new design eliminates the need for an external energy-absorber outside of the housing making it *the smallest* self-retracting lanyard on the market.

### Reliable and Reassuring

Latchways' Lifecycle Warranty means users can work at height with confidence that the Mini PFL will continue to provide safety when it matters most. The product offers fall arrest and restraint for users 130 to 400 lbs (60 to 181 kg) including tools.

### Strong and Tested

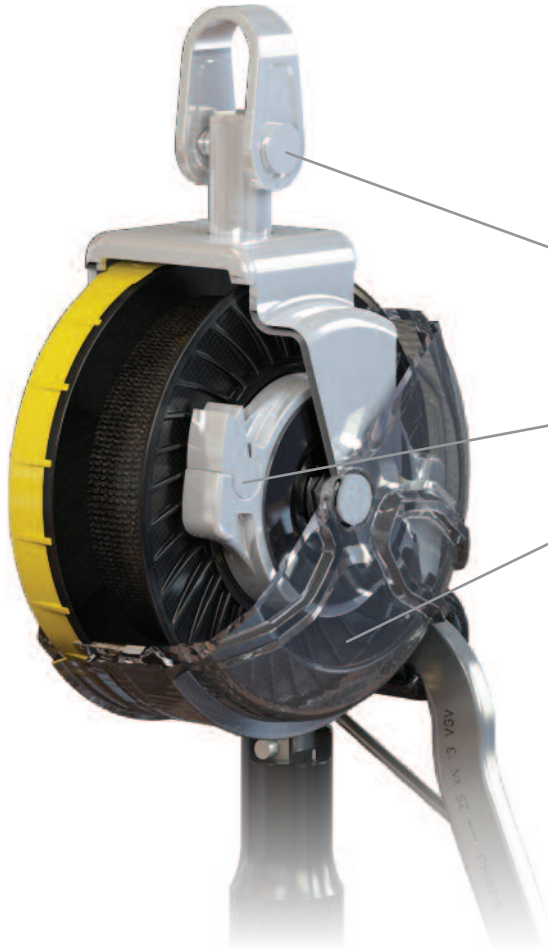
The MSA Latchways Mini PFL has a highly durable polycarbonate, clear casing which allows for easy visual inspection of the critical internal components. It can withstand temperatures ranging from -40° to +130°F (-40° to +54°C) and its high-performing, high-strength webbing lifeline has been manufactured to the highest standard in accordance to Latchways' strict quality-control procedures. The MSA Latchways Mini PFL has been tested to meet these relevant standards:

- ANSI Z359.14 – 2012
- OSHA 1910.66
- OSHA 1926.502
- CSA Z259.2.2-98
- EN360: 2002



*Because every life has a purpose...*

## MSA Latchways Single-Leg Mini PFL



**The world's first self-retracting lifeline with multiple spring radial energy-absorbing technology**

- Integral energy absorber
- Requires zero recalibration or adjustment
- The energy absorber is completely sealed from external contaminants

**Free range of motion**

A fully rotating attachment point for complete flexibility—both 360° and 180°

**Precision engineering**

A structurally reinforced pawl mechanism

**Highly durable**

A polycarbonate case houses the SRL, and its transparency allows for easy visual inspection of critical internal components

**Superior materials**

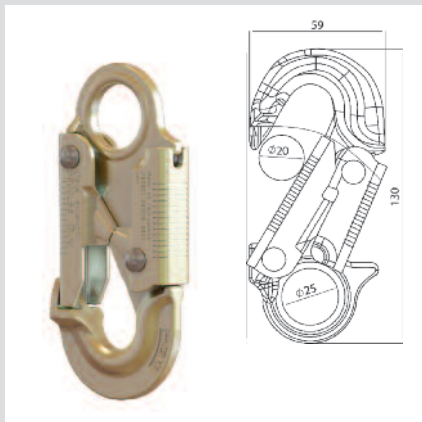
Components manufactured from high-grade stainless steel and engineered plastics

## MSA Latchways Twin-Leg Mini PFL



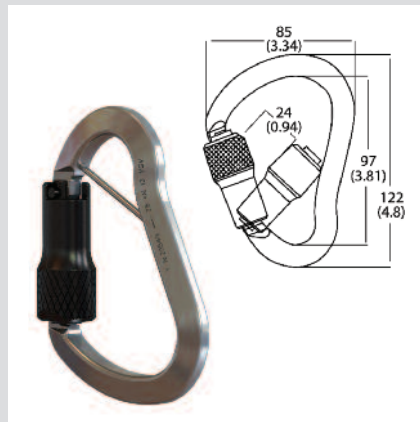
# Available Connectors

The MSA Latchways Mini PFL is supplied with a choice of steel or aluminium top carabiner and has a range of connectors available.



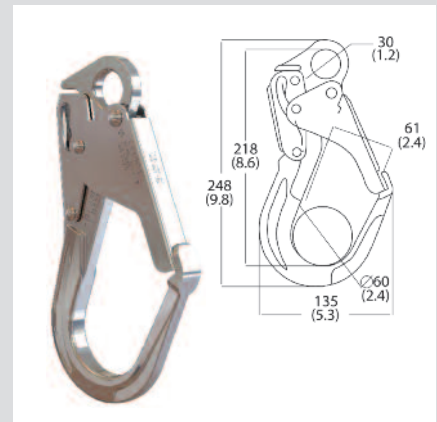
### Forged Steel Saphook (36C)

- Double-action/self-locking gate
- High-tensile steel material
- Zinc-plated finish
- EN, ANSI and CSA compliant



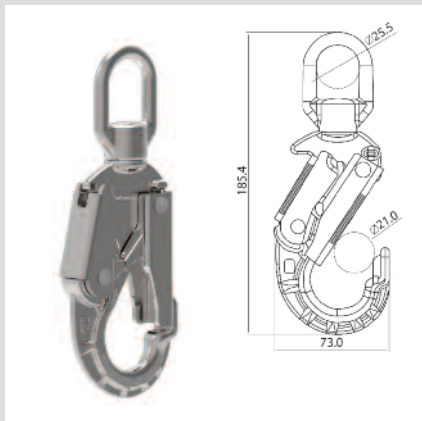
### Carabiner/Hook

- Triple-locking gate
- Aluminum alloy
- EN, ANSI and CSA compliant



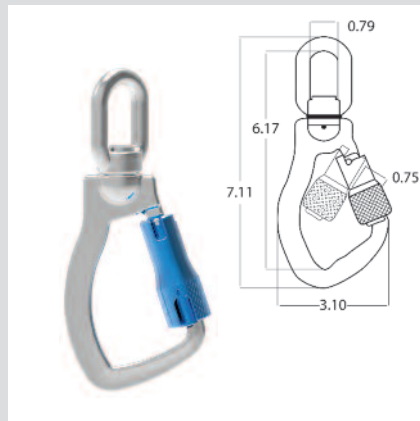
### Aluminum Scaffold Hook (AL36CL)

- Aluminum alloy
- EN, ANSI and CSA compliant



### Forged Steel Swivel Saphook (36CS)

- Double-action/self-locking gate
- High-tensile steel material
- Zinc-plated finish
- ANSI, CSA & EN compliant



### Swivel Carabiner/Hook

- Triple-locking gate
- Aluminum alloy
- ANSI, CSA & EN compliant

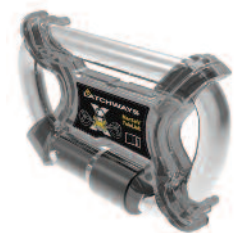


### Steel Scaffold Hook (36CL)

- High-tensile steel material
- Zinc-plated finish
- ANSI, CSA & EN compliant

Ordering Information

Part Number	Type		Line Length	Anchorage Connection	Harness Connection
	Single-Leg	Twin-Leg			
63011-00A	■		6 ft (1.8m)	AL36CL	Steel Carabiner
63011-00B	■		6 ft (1.8m)	36C	Steel Carabiner
63011-00C	■		6 ft (1.8m)	Aluminum Swivel Carabiner	Steel Carabiner
63011-00D	■		6 ft (1.8m)	Aluminum Carabiner	Steel Carabiner
63011-00E	■		6 ft (1.8m)	36CS	Steel Carabiner
63011-00F	■		6 ft (1.8m)	36CS	Steel Carabiner
63011-00G	■		6 ft (1.8m)	AL36CL	—
63011-00H	■		6 ft (1.8m)	36C	—
63011-00I	■		6 ft (1.8m)	Aluminum Swivel Carabiner	—
63011-00J	■		6 ft (1.8m)	Aluminum Triple-lock Carabiner	—
63011-00K	■		6 ft (1.8m)	36CS	—
63011-00L	■		6 ft (1.8m)	36CL	—
63011-00M	■		6 ft (1.8m)	AL36CL	Aluminum Triple-lock Carabiner
63011-00N	■		6 ft (1.8m)	Triple-lock Carabiner	Triple-lock Carabiner
63111-00A		■	6 ft (1.8m)	AL36CL (2)	Twin-Link Connector
63111-00B		■	6 ft (1.8m)	36C (2)	Twin-Link Connector
63111-00C		■	6 ft (1.8m)	Aluminum Swivel Carabiner (2)	Twin-Link Connector
63111-00D		■	6 ft (1.8m)	Aluminum Triple-lock Carabiner (2)	Twin-Link Connector
63111-00E		■	6 ft (1.8m)	36CS (2)	Twin-Link Connector
63111-00F		■	6 ft (1.8m)	36CL (2)	Twin-Link Connector



MSA LATCHWAYS MINI TWIN-LINK	
Part Number	Description
63900-04	Twin-Link Connector for Mini PFL

Note: This Bulletin contains only a general description of the products shown. While uses and performance capabilities are described, under no circumstances shall the products be used by untrained or unqualified individuals and not until the product instructions including any warnings or cautions provided have been thoroughly read and understood. Only they contain the complete and detailed information concerning proper use and care of these products.



ID 4600-008-MC / March 2016  
© MSA 2016 Printed in U.S.A.

**MSA – The Safety Company**  
1000 Cranberry Woods Drive  
Cranberry Township, PA 16066 USA  
Phone 724-776-8600  
[www.MSAafety.com](http://www.MSAafety.com)

**U.S. Customer Service Center**  
Phone 1-800-MSA-2222  
Fax 1-800-967-0398

**MSA Canada**  
Phone 1-800-672-2222  
Fax 1-800-967-0398

**MSA Mexico**  
Phone 01 800 672 7222  
Fax 52 - 44 2227 3943